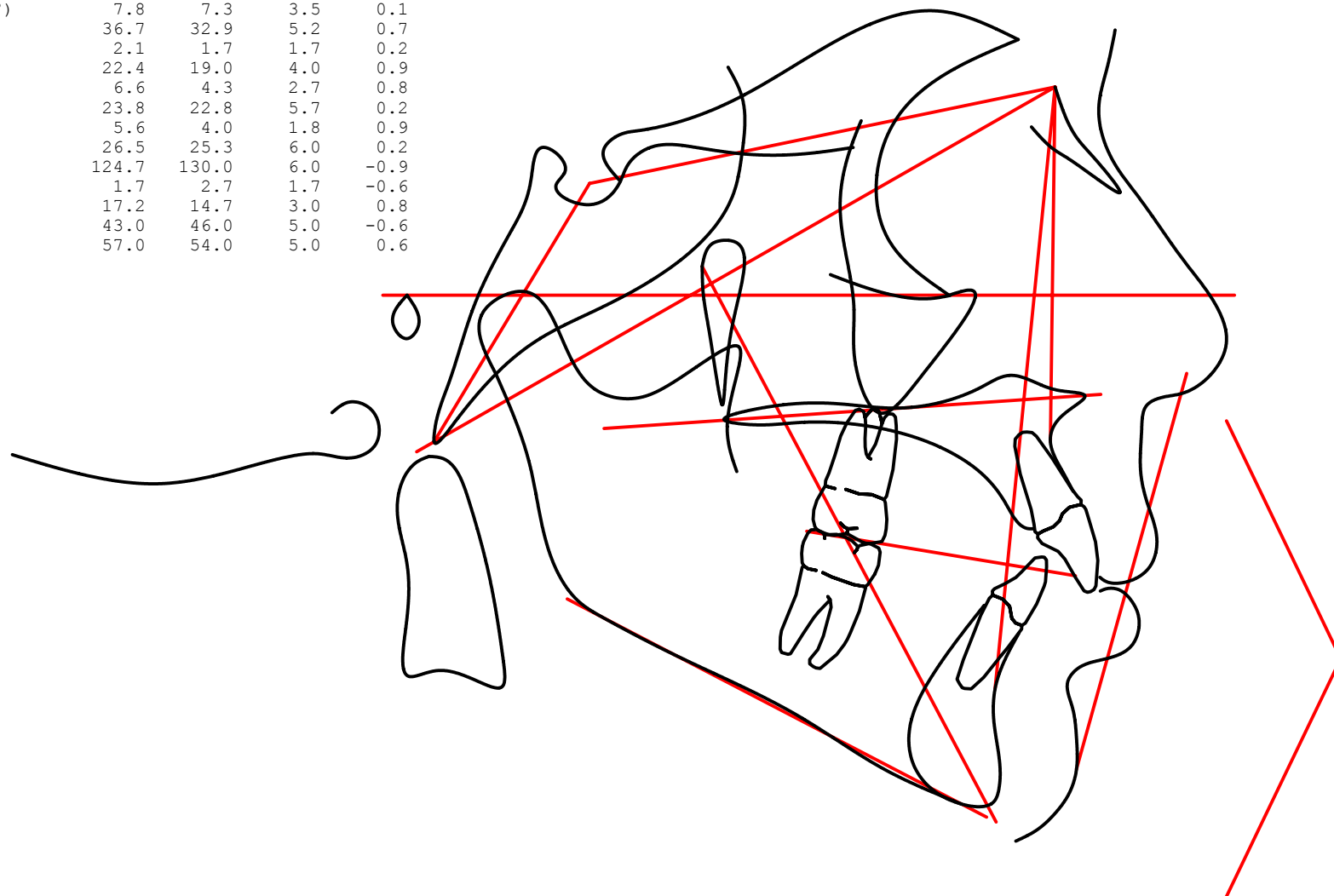


	Value	Norm	Std Dev	Dev Norm
SNA (°)	77.5	82.0	3.5	-1.3 *
SNB (°)	72.6	80.0	3.0	-2.5 **
ANB (°)	4.9	2.0	2.4	1.2 *
Wits Appraisal (mm)	2.2	-1.0	1.0	3.2 ***
Facial Axis-Ricketts (NaBa-PtGn) (°)	88.1	90.0	3.5	-0.5
Cranio-Mx Base/SN-Palatal Plane (°)	7.8	7.3	3.5	0.1
SN - GoGn (°)	36.7	32.9	5.2	0.7
Pog - NB (mm)	2.1	1.7	1.7	0.2
SN-FOP (°)	22.4	19.0	4.0	0.9
U1 - NA (mm)	6.6	4.3	2.7	0.8
U1 - NA (°)	23.8	22.8	5.7	0.2
L1 - NB (mm)	5.6	4.0	1.8	0.9
L1 - NB (°)	26.5	25.3	6.0	0.2
Interincisal Angle (U1-L1) (°)	124.7	130.0	6.0	-0.9
L1 Protrusion (L1-APo) (mm)	1.7	2.7	1.7	-0.6
U6 - PT Vertical (mm)	17.2	14.7	3.0	0.8
UFH (Na-ANS) (%)	43.0	46.0	5.0	-0.6
LFH (ANS-Me FH) (%)	57.0	54.0	5.0	0.6



Colors indicate deviations from the norm as follows:

Black: a deviation less than or equal to 1.

Green: a deviation greater than 1 and less than or equal to 2.

Blue: a deviation of greater than 2 and less than or equal to 3.

Red: a deviation of greater than 3.

NOTE: This information is suggestive only. Any diagnosis and prescription should be the decision and sole responsibility of the doctor using this material.