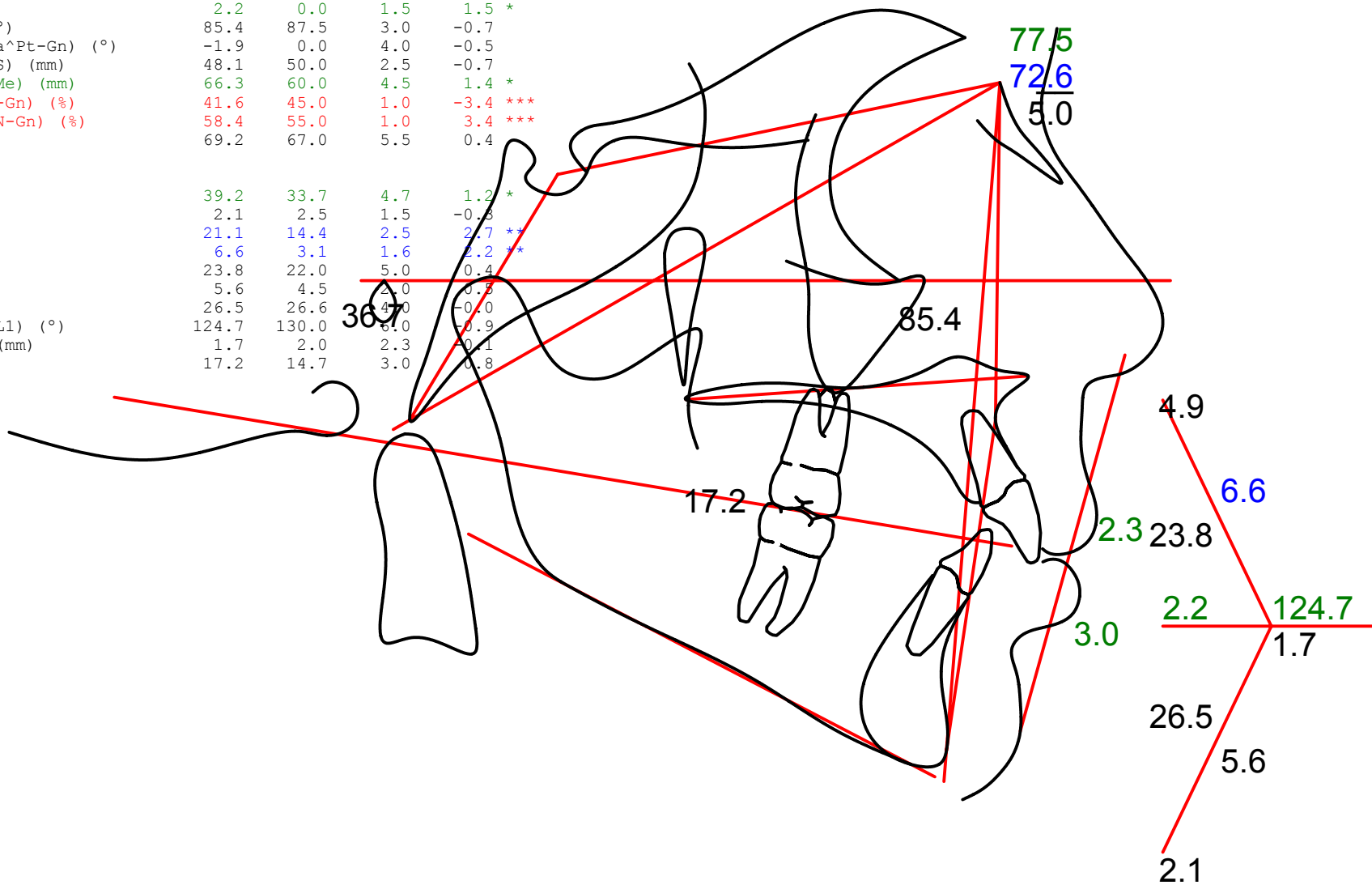


	Value	Norm	Std Dev	Dev Norm
Upper Lip - S Line (mm)	2.3	0.0	2.0	1.1 *
Lower Lip - S Line (mm)	3.0	0.0	2.0	1.5 *
SNA (°)	77.5	82.0	3.5	-1.3 *
SNB (°)	72.6	80.9	3.4	-2.4 **
ANB (°)	4.9	3.0	2.5	0.8
Wits Appraisal (mm)	2.2	0.0	1.5	1.5 *
Facial Angle (FH-NPo) (°)	85.4	87.5	3.0	-0.7
Facial Axis Angle (Ba-Na^Pt-Gn) (°)	-1.9	0.0	4.0	-0.5
Upper Face Height (N-ANS) (mm)	48.1	50.0	2.5	-0.7
Lower Face Height (ANS-Me) (mm)	66.3	60.0	4.5	1.4 *
UFH:LFH, Upper (N-ANS/N-Gn) (%)	41.6	45.0	1.0	-3.4 ***
UFH:LFH, Lower (ANS-Gn/N-Gn) (%)	58.4	55.0	1.0	3.4 ***
Y-Axis (SGn-SN) (°)	69.2	67.0	5.5	0.4
Mand Plane to SN (°)	39.2	33.7	4.7	1.2 *
Pog - NB (mm)	2.1	2.5	1.5	-0.3
Occ Plane to SN (°)	21.1	14.4	2.5	2.7 **
U1 - NA (mm)	6.6	3.1	1.6	2.2 **
U1 - NA (°)	23.8	22.0	5.0	0.4
L1 - NB (mm)	5.6	4.5	2.0	0.5
L1 - NB (°)	26.5	26.6	4.0	-0.0
Interincisal Angle (U1-L1) (°)	124.7	130.0	6.0	-0.9
L1 Protrusion (L1-APo) (mm)	1.7	2.0	2.3	-0.1
U6 - PT Vertical (mm)	17.2	14.7	3.0	0.8



Colors indicate deviations from the norm as follows:

Black: a deviation less than or equal to 1.

Green: a deviation greater than 1 and less than or equal to 2.

Blue: a deviation of greater than 2 and less than or equal to 3.

Red: a deviation of greater than 3.

NOTE: This information is suggestive only. Any diagnosis and prescription should be the decision and sole responsibility of the doctor using this material.