

|                                       | Value | Norm  | Std Dev | Dev Norm  |
|---------------------------------------|-------|-------|---------|-----------|
| Upper Incisor to Palatal Plane (°)    | 109.1 | 111.5 | 1.5     | -1.6 *    |
| Lower Incisor to Mandibular Plane (°) | 94.7  | 95.0  | 5.0     | -0.1      |
| Upper Gonial Angle (°)                | 61.1  | 53.5  | 1.5     | 5.1 ***** |
| Lower Gonial Angle (°)                | 73.8  | 72.5  | 2.5     | 0.5       |
| Upper Incisor to ANS Arc              | 3.3   | 2.0   | 2.0     | 0.6       |
| B to A Point Arc                      | -2.2  | 0.0   | 3.0     | -0.7      |
| Pogonion to ANS Arc                   | -1.5  | 0.0   | 3.0     | -0.5      |
| Upper Lip Angle (ULA)                 | 91.6  | 107.5 | 7.5     | -2.1 **   |

SUMMARY ANALYSIS

- Sassouni Bottomline -

Skeletal A-P: Class I with class II tendency

Skeletal Vertical Pattern: Open Bite

Upper Incisor Position: Protruded

Lower Incisor Angulation: Normal

Growth Direction: Counterclockwise

Maxilla Length: Normal

Maxilla Position: Posterior

Permanent Molar Position: Anterior

Primary Molar Position: Anterior

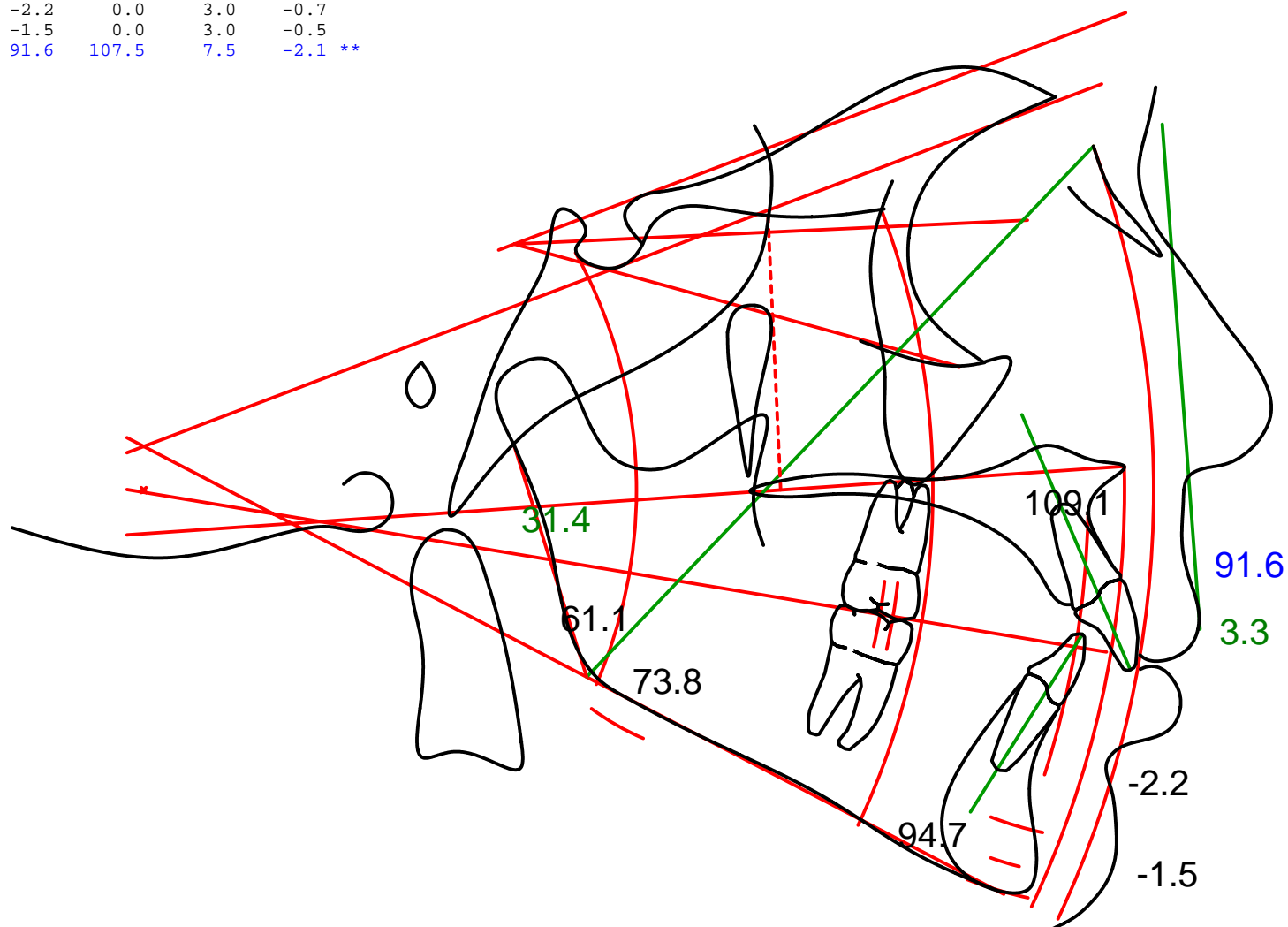
Mandible Length: Short - Anteriorly

Mandible Position: Posterior

Upper Lip Angle: Flat

Upper Incisor Angulation: Low

P to B Vertical: Normal



Colors indicate deviations from the norm as follows:

Black: a deviation less than or equal to 1.

Green: a deviation greater than 1 and less than or equal to 2.

Blue: a deviation of greater than 2 and less than or equal to 3.

Red: a deviation of greater than 3.

NOTE: This information is suggestive only. Any diagnosis and prescription should be the decision and sole responsibility of the doctor using this material.

