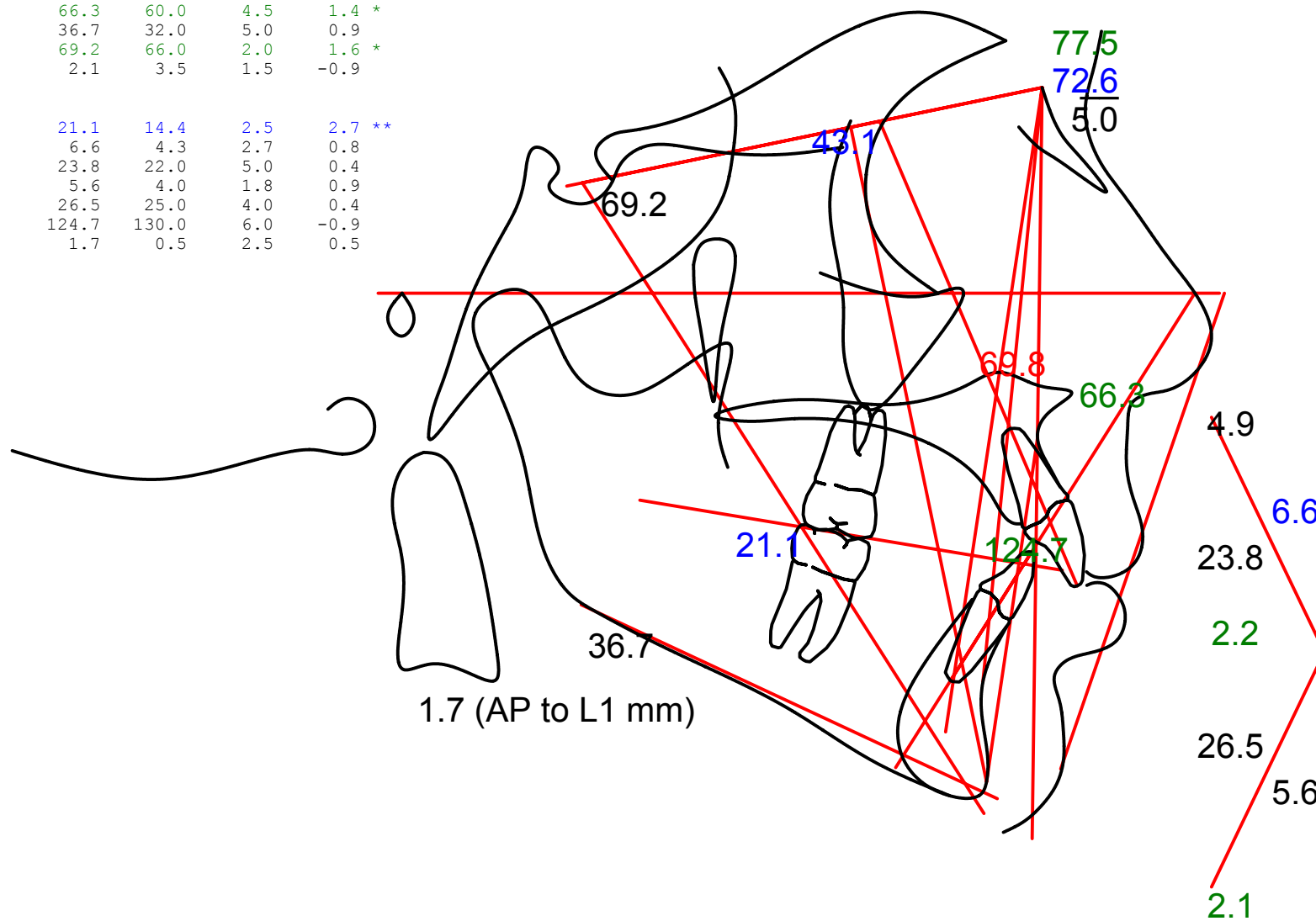


	Value	Norm	Std Dev	Dev Norm
Skeletal				
SNA (°)	77.5	82.0	3.5	-1.3 *
SNB (°)	72.6	80.9	3.4	-2.4 **
ANB (°)	4.9	1.6	1.5	2.2 **
Sella to Point L (mm)	43.1	51.0	3.0	-2.6 **
Wits Appraisal (mm)	2.2	-1.0	1.0	3.2 ***
Lower Face Height (mm)	66.3	60.0	4.5	1.4 *
Gonion-Gnathion to SN (°)	36.7	32.0	5.0	0.9
Y-Axis (°)	69.2	66.0	2.0	1.6 *
Pog - NB (mm)	2.1	3.5	1.5	-0.9
Dental				
Occ Plane to SN (°)	21.1	14.4	2.5	2.7 **
U1 - NA (mm)	6.6	4.3	2.7	0.8
U1 - NA (°)	23.8	22.0	5.0	0.4
L1 - NB (mm)	5.6	4.0	1.8	0.9
L1 - NB (°)	26.5	25.0	4.0	0.4
Interincisal Angle (°)	124.7	130.0	6.0	-0.9
L1 to A-Po Distance (mm)	1.7	0.5	2.5	0.5



Colors indicate deviations from the norm as follows:

Black: a deviation less than or equal to 1.

Green: a deviation greater than 1 and less than or equal to 2.

Blue: a deviation of greater than 2 and less than or equal to 3.

Red: a deviation of greater than 3.

NOTE: This information is suggestive only. Any diagnosis and prescription should be the decision and sole responsibility of the doctor using this material.