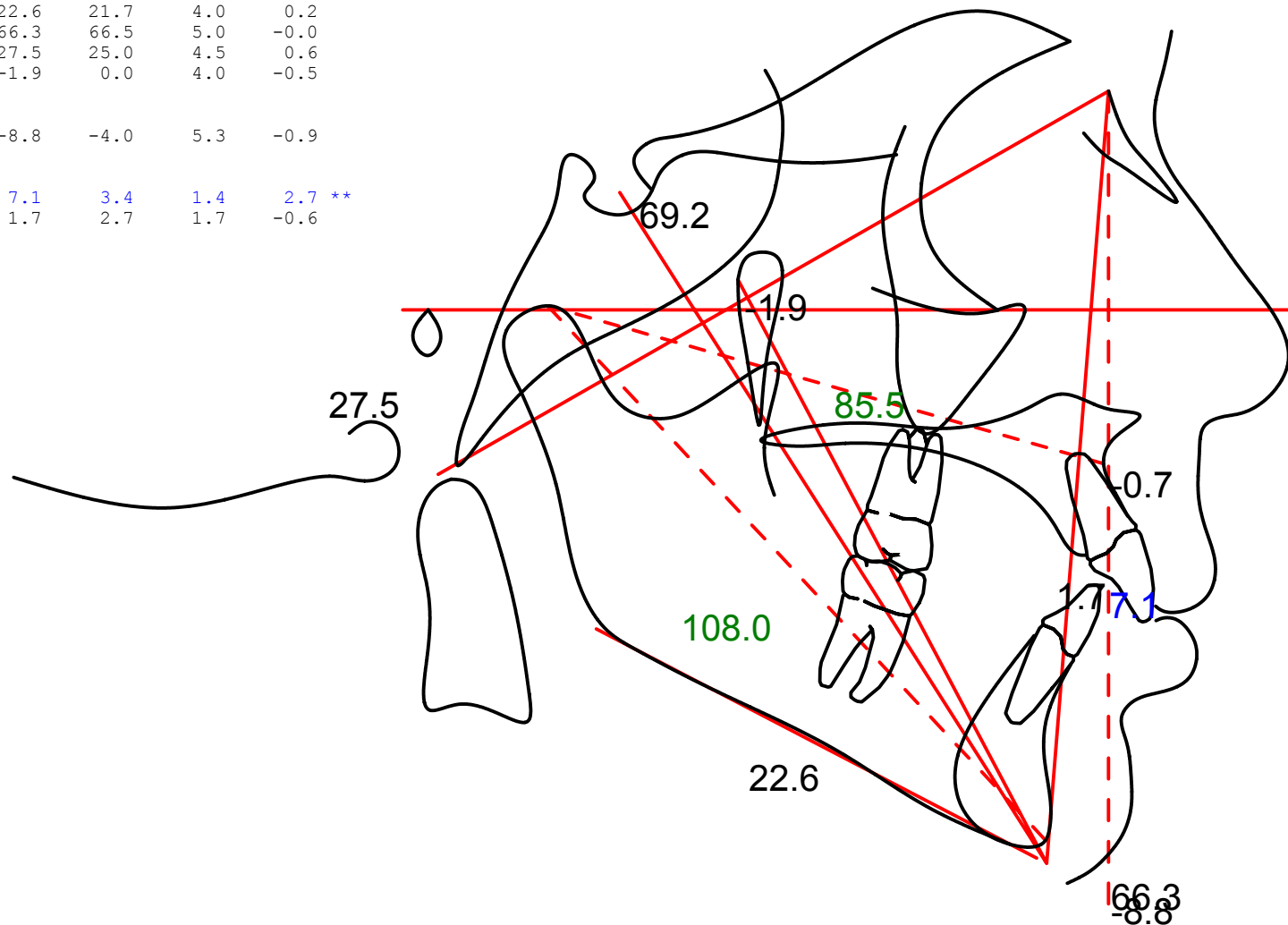


	Value	Norm	Std Dev	Dev Norm
Maxilla to Cranial Base				
Maxillary Skeletal (A-Na Perp) (mm)	-0.7	0.0	3.1	-0.2
SNA (°)	77.5	82.0	3.5	-1.3 *
Mandible to Maxilla				
Mandibular length (Co-Gn) (mm)	108.0	115.6	4.0	-1.9 *
Maxillary length (Co-A) (mm)	85.5	90.0	5.0	-0.9
Mx/Md diff (Co-Gn - Co-A) (mm)	22.6	21.7	4.0	0.2
Anterior Facial Ht (ANS-Me) (mm)	66.3	66.5	5.0	-0.0
FMA (MP-FH) (°)	27.5	25.0	4.5	0.6
Facial Axis Angle (Ba-Na^Pt-Gn) (°)	-1.9	0.0	4.0	-0.5
Mandible to Cranial Base				
Mand. Skeletal (Pg-Na Perp) (mm)	-8.8	-4.0	5.3	-0.9
Dentition				
U1 Most Labial-A (perp to FH) (mm)	7.1	3.4	1.4	2.7 **
L1 Protrusion (L1-APo) (mm)	1.7	2.7	1.7	-0.6



Colors indicate deviations from the norm as follows:

Black: a deviation less than or equal to 1.

Green: a deviation greater than 1 and less than or equal to 2.

Blue: a deviation of greater than 2 and less than or equal to 3.

Red: a deviation of greater than 3.

NOTE: This information is suggestive only. Any diagnosis and prescription should be the decision and sole responsibility of the doctor using this material.