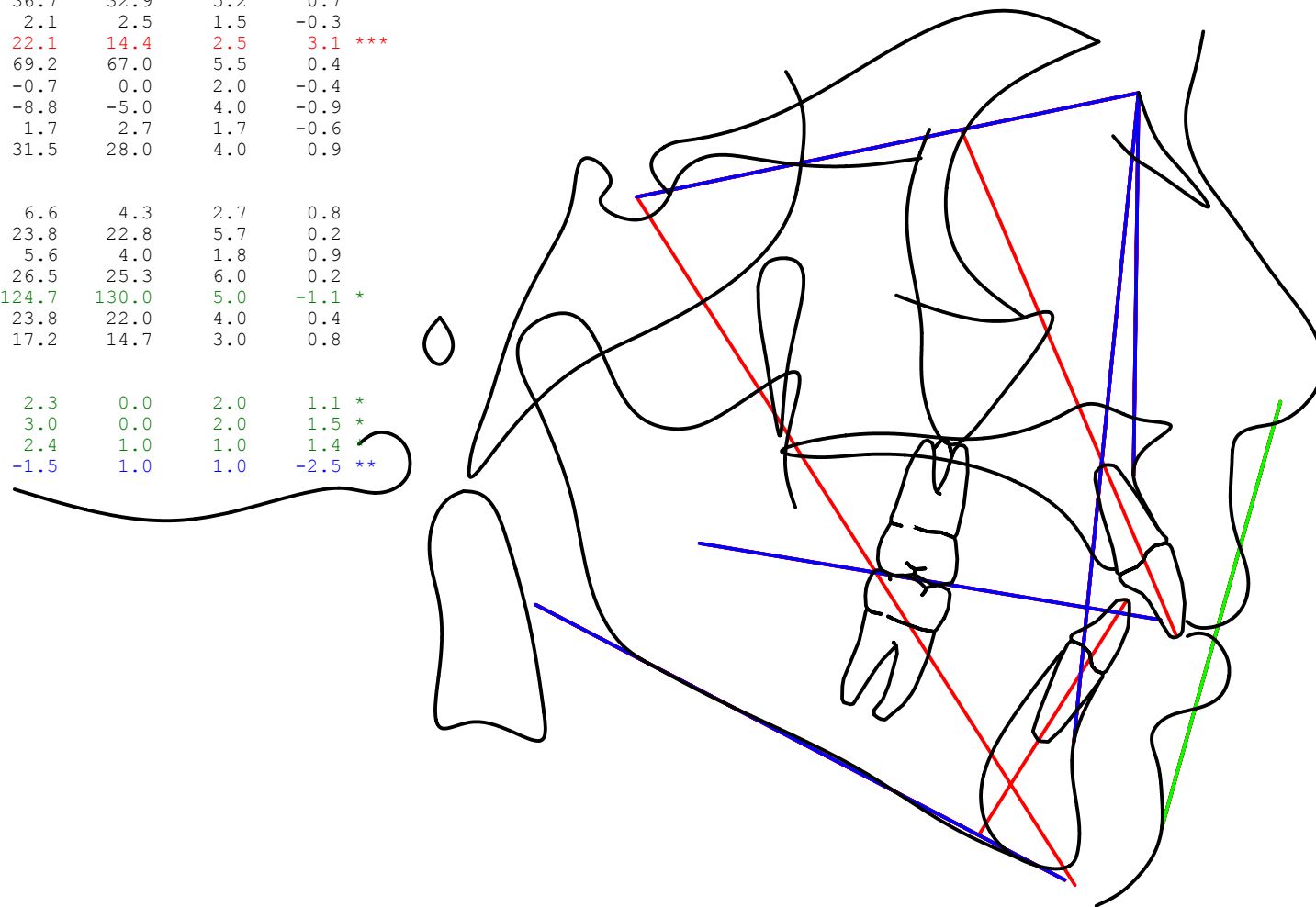


	Value	Norm	Std Dev	Dev Norm	
<b>Skeletal</b>					
SNA (°)	77.5	82.0	3.5	-1.3	*
SNB (°)	72.6	80.0	3.0	-2.5	**
ANB (°)	4.9	2.0	2.4	1.2	*
Wits Appraisal (mm)	2.2	0.0	1.0	2.2	**
Upper Facial Height	41.6	45.0	1.0	-3.4	***
Lower Facial Height	58.4	55.0	1.0	3.4	***
GoGn to SN (°)	36.7	32.9	5.2	0.7	
Pogonion to NB (mm)	2.1	2.5	1.5	-0.3	
Occlusal to SN (°)	22.1	14.4	2.5	3.1	***
Y-Axis (SGn-SN) (°)	69.2	67.0	5.5	0.4	
Nasion Perpendicular to A point (mm)	-0.7	0.0	2.0	-0.4	
Nasion Perpendicular to Pogonion (mm)	-8.8	-5.0	4.0	-0.9	
L1 Protrusion (L1-APo) (mm)	1.7	2.7	1.7	-0.6	
U-Incisor Inclination (U1-APo) (°)	31.5	28.0	4.0	0.9	
<b>Dental</b>					
U1 - NA (mm)	6.6	4.3	2.7	0.8	
U1 - NA (°)	23.8	22.8	5.7	0.2	
L1 - NB (mm)	5.6	4.0	1.8	0.9	
L1 - NB (°)	26.5	25.3	6.0	0.2	
Interincisal Angle	124.7	130.0	5.0	-1.1	*
L1 to A-Po (°)	23.8	22.0	4.0	0.4	
U6 - PT Vertical (mm)	17.2	14.7	3.0	0.8	
<b>Facial</b>					
Upper Lip - S Line (mm)	2.3	0.0	2.0	1.1	*
Lower Lip - S Line (mm)	3.0	0.0	2.0	1.5	*
Upper Lip Thickness (mm)	2.4	1.0	1.0	1.4	*
Lower Lip Thickness (mm)	-1.5	1.0	1.0	-2.5	**



Colors indicate deviations from the norm as follows:

Black: a deviation less than or equal to 1.

Green: a deviation greater than 1 and less than or equal to 2.

Blue: a deviation of greater than 2 and less than or equal to 3.

Red: a deviation of greater than 3.

NOTE: This information is suggestive only. Any diagnosis and prescription should be the decision and sole responsibility of the doctor using this material.