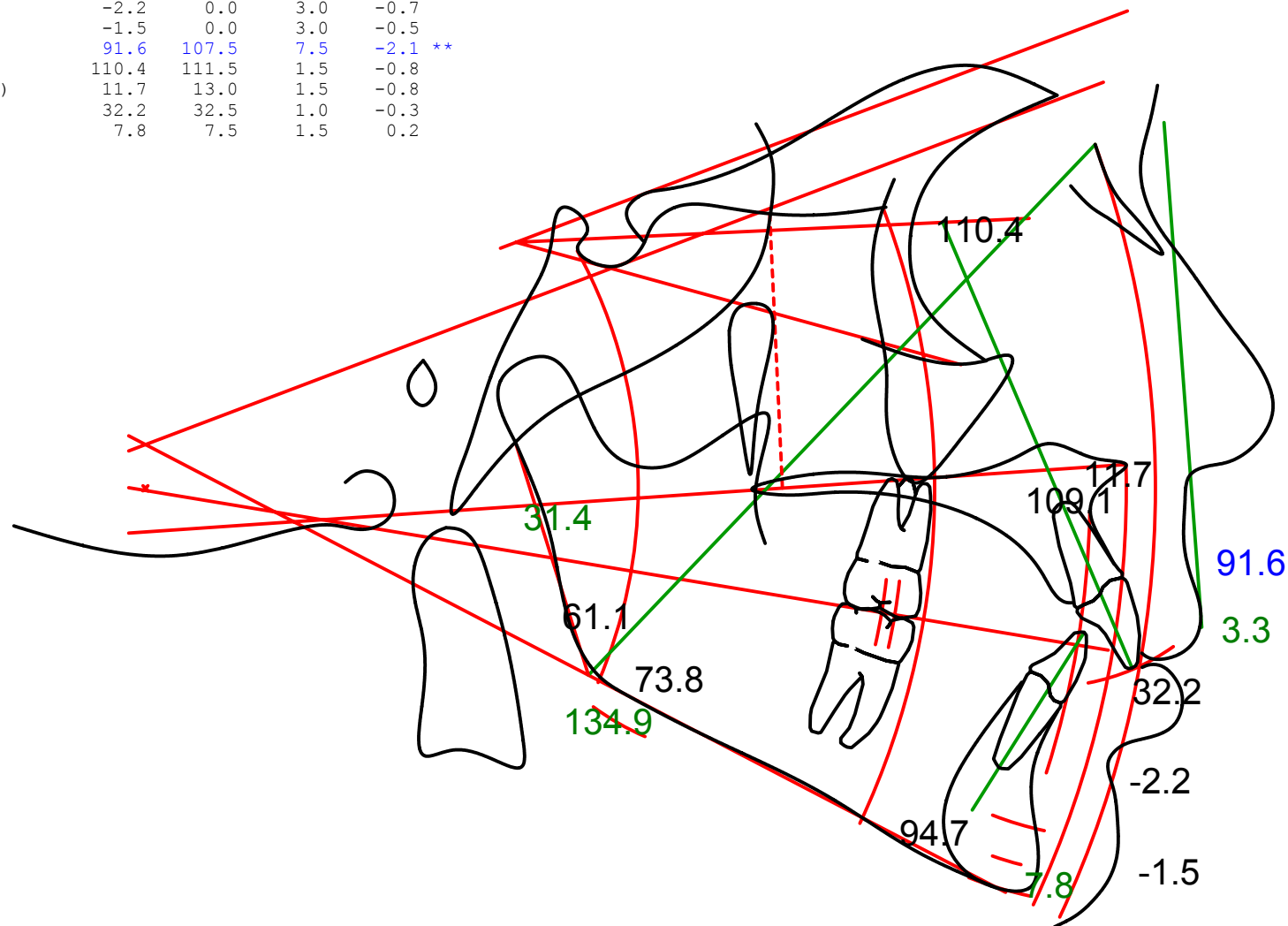


	Value	Norm	Std Dev	Dev Norm
U1 - Palatal Plane (°)	109.1	111.5	1.5	-1.6 *
IMPA (L1-MP) (°)	94.7	95.0	5.0	-0.1
Upper Gonial Angle (Ar-Go-Na) (°)	61.1	53.5	1.5	5.1 *****
Lower Gonial Angle (Na-Go-Me) (°)	73.8	72.5	2.5	0.5
U1 to ANS Arc	3.3	2.0	2.0	0.6
B to A Point Arc	-2.2	0.0	3.0	-0.7
Pg to ANS Arc	-1.5	0.0	3.0	-0.5
Upper Lip Angle (ULA)	91.6	107.5	7.5	-2.1 **
Upper Incisor to Optic Plane (°)	110.4	111.5	1.5	-0.8
Effective Length of the Premaxilla (ELP) (mm)	11.7	13.0	1.5	-0.8
Dentoalveolar Compensation (DAC) (mm)	32.2	32.5	1.0	-0.3
B-Po MP (mm)	7.8	7.5	1.5	0.2

SUMMARY ANALYSIS

- Sassouni Bottomline -
 Skeletal A-P: Class I with class II tendency
 Skeletal Vertical Pattern: Open Bite
 Upper Incisor Position: Protruded
 Lower Incisor Angulation: Normal
 Growth Direction: Counterclockwise
 Maxilla Length: Normal
 Maxilla Position: Posterior
 Permanent Molar Position: Anterior
 Primary Molar Position: Anterior
 Mandible Length: Short - Anteriorly
 Mandible Position: Posterior
 Upper Lip Angle: Flat
 Upper Incisor Angulation: Low
 P to B Vertical: Normal



Colors indicate deviations from the norm as follows:

Black: a deviation less than or equal to 1.

Green: a deviation greater than 1 and less than or equal to 2.

Blue: a deviation of greater than 2 and less than or equal to 3.

Red: a deviation of greater than 3.

NOTE: This information is suggestive only. Any diagnosis and prescription should be the decision and sole responsibility of the doctor using this material.