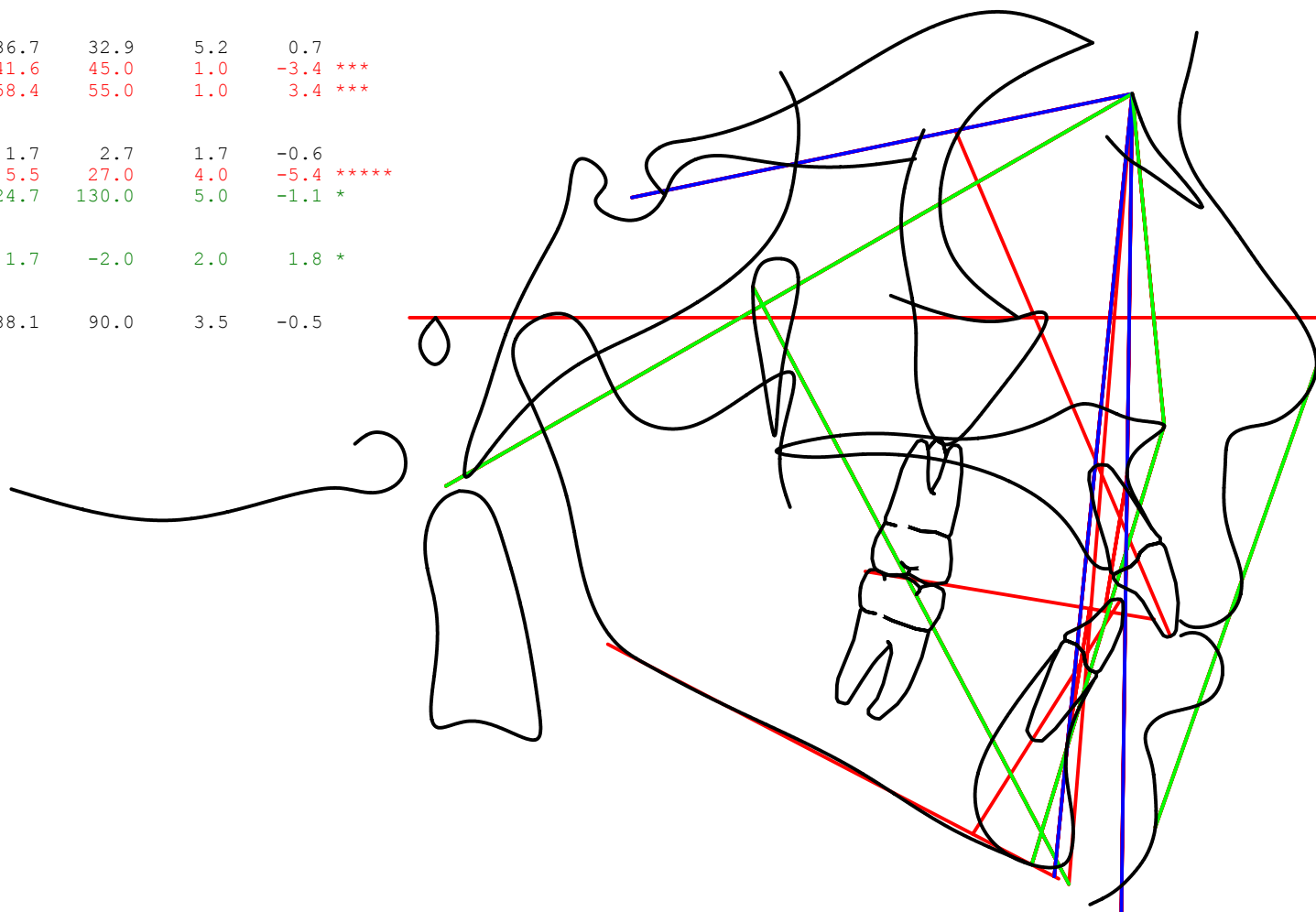


	Value	Norm	Std Dev	Dev Norm
Zone One: Skeletal (Anterior-posterior)				
SNA (°)	77.5	82.0	3.5	-1.3 *
A-N Perpendicular (mm)	-0.7	0.0	2.0	-0.4
SNB (°)	72.6	80.0	3.0	-2.5 **
Pog-N Perpendicular (mm)	-8.8	-5.0	4.0	-0.9
ANB (°)	4.9	2.0	2.4	1.2 *
Wits Appraisal (mm)	2.2	0.0	1.0	2.2 **
Zone Two: Skeletal (Vertical)				
SN - GoGn (°)	36.7	32.9	5.2	0.7
UFH:LFH, Upper (N-ANS/N-Gn) (%)	41.6	45.0	1.0	-3.4 ***
UFH:LFH, Lower (ANS-Gn/N-Gn) (%)	58.4	55.0	1.0	3.4 ***
Zone Three: Dental				
L1 Protrusion (L1-APo) (mm)	1.7	2.7	1.7	-0.6
U1 to Nasion Perp (mm)	5.5	27.0	4.0	-5.4 *****
Interincisal Angle (U1-L1) (°)	124.7	130.0	5.0	-1.1 *
Zone Four: Soft Tissue				
Lower Lip to E-Plane (mm)	1.7	-2.0	2.0	1.8 *
Zone Five: Growth				
Facial Axis-Ricketts (NaBa-PtGn) (°)	88.1	90.0	3.5	-0.5



Colors indicate deviations from the norm as follows:

Black: a deviation less than or equal to 1.

Green: a deviation greater than 1 and less than or equal to 2.

Blue: a deviation of greater than 2 and less than or equal to 3.

Red: a deviation of greater than 3.

NOTE: This information is suggestive only. Any diagnosis and prescription should be the decision and sole responsibility of the doctor using this material.