

	Value	Norm	Std Dev	Dev Norm
Wits (mm)	2.2	-1.0	2.0	1.6 *
Upper Incisor Angle (°)	109.1	111.5	1.5	-1.6 *
Lower Incisor Angle (°)	94.7	95.0	5.0	-0.1
L1 Protrusion (L1-APo) (mm)	1.7	1.0	2.0	0.4
U1 - SN (°)	101.3	104.0	3.0	-0.9
SNA (°)	77.5	82.0	2.0	-2.2 **
SNB (°)	72.6	80.0	2.0	-3.7 ***
ANB (°)	4.9	3.0	2.5	0.8
SN - GoGn (°)	36.7	32.0	5.0	0.9

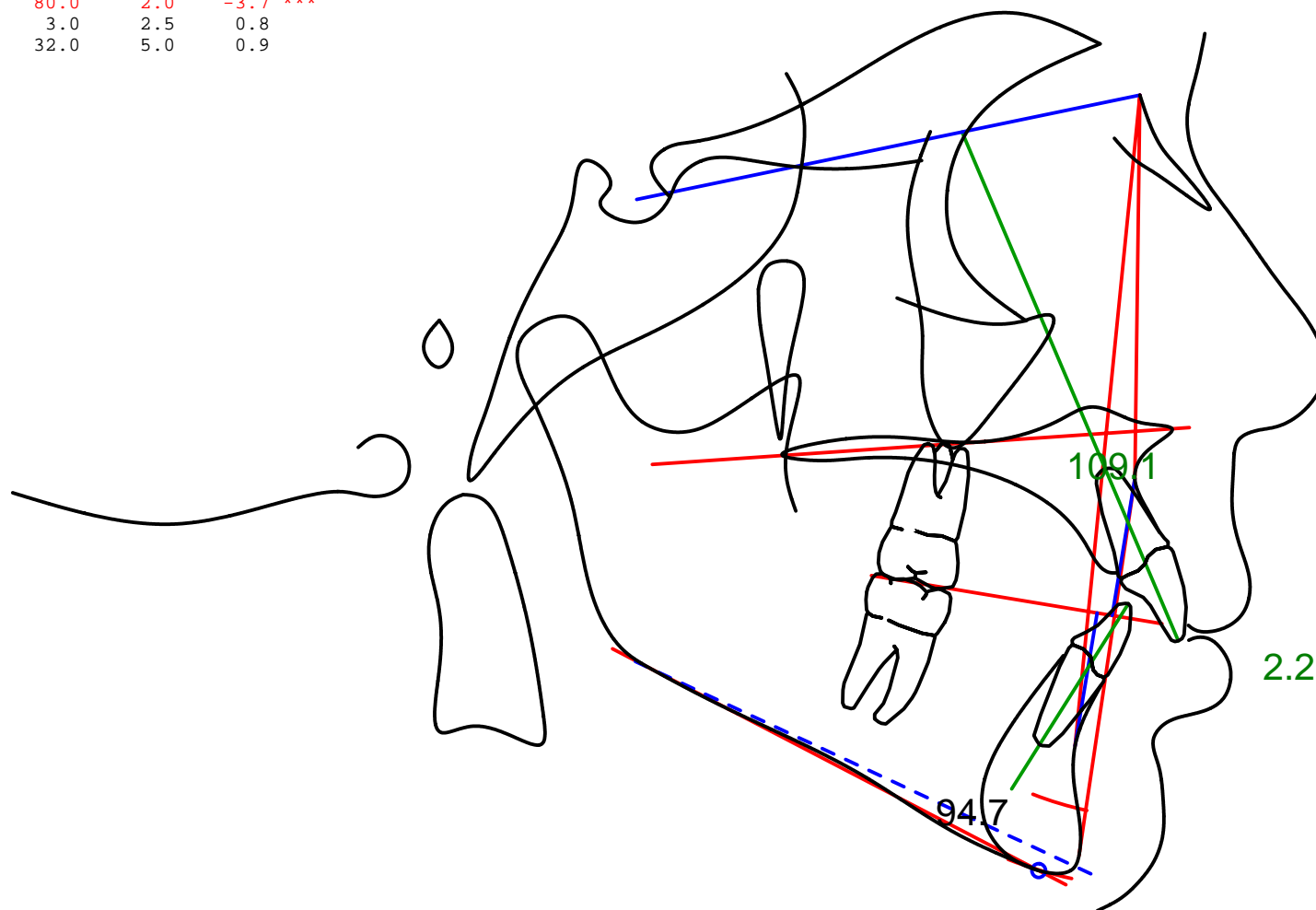
SUMMARY ANALYSIS

Skeletal Classification: Class II

Skeletal Vertical: OB

Upper Incisor: L

Lower Incisor: N



Colors indicate deviations from the norm as follows:

Black: a deviation less than or equal to 1.

Green: a deviation greater than 1 and less than or equal to 2.

Blue: a deviation of greater than 2 and less than or equal to 3.

Red: a deviation of greater than 3.

NOTE: This information is suggestive only. Any diagnosis and prescription should be the decision and sole responsibility of the doctor using this material.