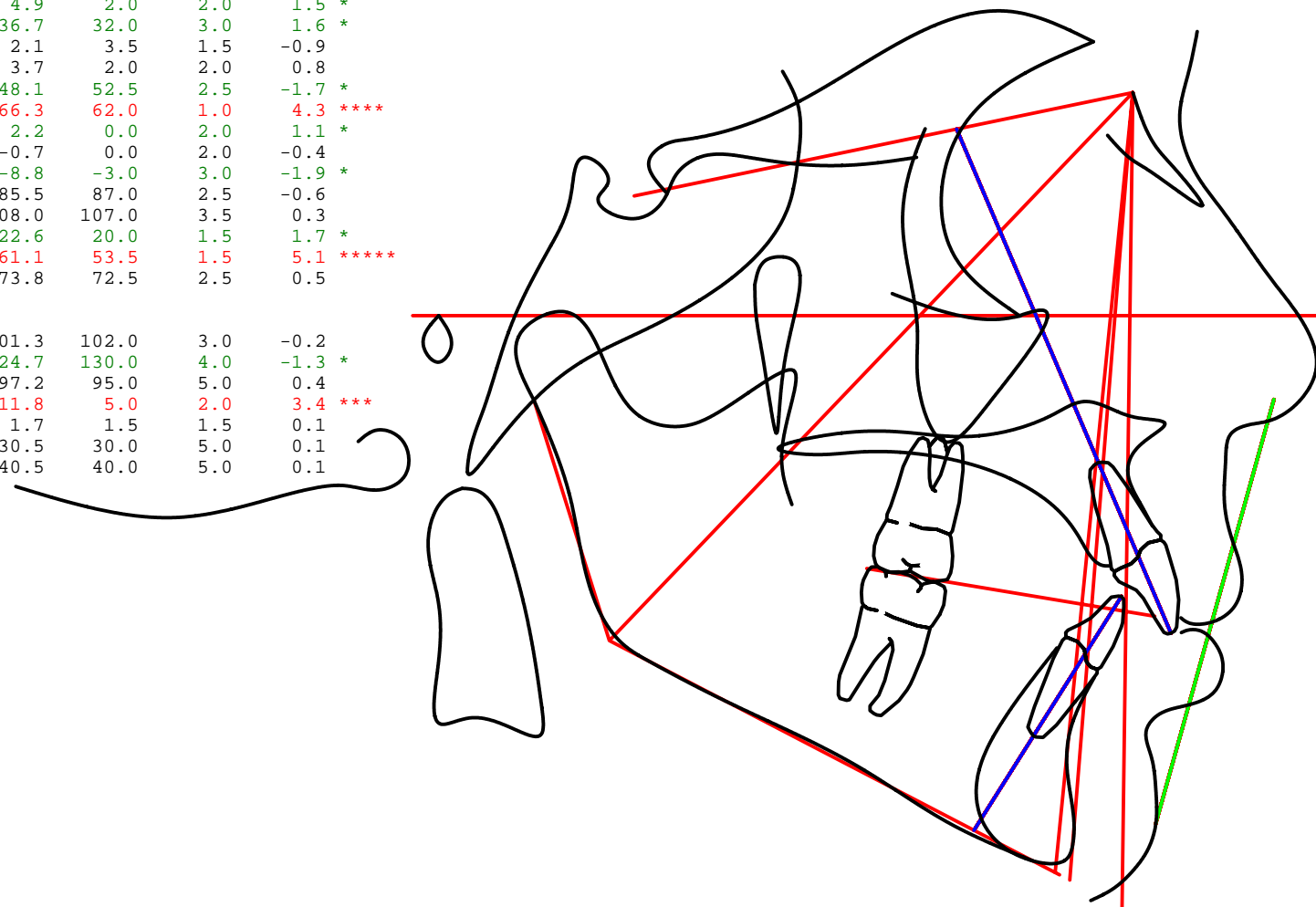


| | Value | Norm | Std Dev | Dev Norm |
|-------------------------------------|-------|-------|---------|-----------|
| Profile | | | | |
| Upper Lip - S Line (mm) | 2.3 | 0.0 | 2.0 | 1.1 * |
| Lower Lip - S Line (mm) | 3.0 | 0.0 | 2.0 | 1.5 * |
| Skeletal | | | | |
| SNA (°) | 77.5 | 82.0 | 2.0 | -2.2 ** |
| SNB (°) | 72.6 | 80.0 | 2.0 | -3.7 *** |
| ANB (°) | 4.9 | 2.0 | 2.0 | 1.5 * |
| SN - GoGn (°) | 36.7 | 32.0 | 3.0 | 1.6 * |
| Pog - NB (mm) | 2.1 | 3.5 | 1.5 | -0.9 |
| Convexity (A-NPo) (mm) | 3.7 | 2.0 | 2.0 | 0.8 |
| Upper Face Height (N-ANS) (mm) | 48.1 | 52.5 | 2.5 | -1.7 * |
| Lower Face Height (ANS-Me) (mm) | 66.3 | 62.0 | 1.0 | 4.3 **** |
| Wits Appraisal (mm) | 2.2 | 0.0 | 2.0 | 1.1 * |
| Maxillary Skeletal (A-Na Perp) (mm) | -0.7 | 0.0 | 2.0 | -0.4 |
| Pog-N Perpendicular (mm) | -8.8 | -3.0 | 3.0 | -1.9 * |
| Maxillary length (Co-A) (mm) | 85.5 | 87.0 | 2.5 | -0.6 |
| Mandibular length (Co-Gn) (mm) | 108.0 | 107.0 | 3.5 | 0.3 |
| Mx/Md diff (Co-Gn - Co-A) (mm) | 22.6 | 20.0 | 1.5 | 1.7 * |
| Upper Gonial Angle (Ar-Go-Na) (°) | 61.1 | 53.5 | 1.5 | 5.1 ***** |
| Lower Gonial Angle (Na-Go-Me) (°) | 73.8 | 72.5 | 2.5 | 0.5 |
| Dental | | | | |
| U1 Angulation (U1 - SN) (°) | 101.3 | 102.0 | 3.0 | -0.2 |
| Interincisal Angle (U1-L1) (°) | 124.7 | 130.0 | 4.0 | -1.3 * |
| L1 - GoGn (°) | 97.2 | 95.0 | 5.0 | 0.4 |
| U1 - NP (mm) | 11.8 | 5.0 | 2.0 | 3.4 *** |
| L1 - AP (mm) | 1.7 | 1.5 | 1.5 | 0.1 |
| U1 - ANS (mm) | 30.5 | 30.0 | 5.0 | 0.1 |
| L1 - Menton (mm) | 40.5 | 40.0 | 5.0 | 0.1 |



Colors indicate deviations from the norm as follows:

Black: a deviation less than or equal to 1.

Green: a deviation greater than 1 and less than or equal to 2.

Blue: a deviation of greater than 2 and less than or equal to 3.

Red: a deviation of greater than 3.

NOTE: This information is suggestive only. Any diagnosis and prescription should be the decision and sole responsibility of the doctor using this material.