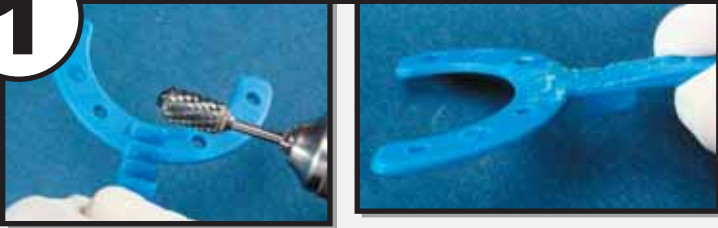




# PER-FECT BITE CONSTRUCTION BITES 2MM & 4MM VERTICAL OPENINGS

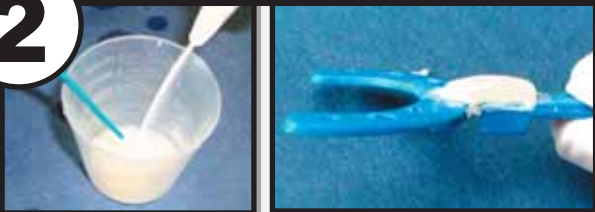
## SECTION - II. CENTRIC AND VERTICAL RELATION CONSTRUCTION BITES

**1**



1. In order to obtain a proper centric or vertical relation bite, you must first modify the Per-Fect Bite by removing the 3 notches. This is easily done with a laboratory acrylic carbide bur.

**2**



2. Next, mix a small amount of acrylic and place a small "strip" on the area where you removed the three notches. Be sure to wet the plastic with liquid monomer first, in order for the acrylic to bond to the Per-Fect Bite.

**3**



3. While the acrylic is still soft, place the Per-Fect Bite in the mouth WITH THE LARGE SINGLE NOTCH UP so that the upper centrals engage the notch. Have the patient bite into centric occlusion or centric relation so their lower anteriors index into the acrylic strip. Once this is done, dip the Per-Fect Bite into a hot water bath in order to fully cure the acrylic.

**\*\*After this, follow steps 3 and 4 under Section I, Functional and Repositioning Bites.**

Note: As with all construction bites, be sure that when the patient is biting into the Per-Fect Bite that the midline is lined up.

Note: The vertical and AP position as provided by the Per-Fect Bite can always be modified by grinding a custom notch on the Per-Fect Bite.



Tools and supplies necessary for taking a proper construction bite

Entire Construction Bite Kit . . . . . \$315.00  
 Save 20%

- Includes:
- Per-Fect Bites, 2mm, pack 12 each . . . . . \$14.50
  - Per-Fect Bites, 4mm, pack 12 each . . . . . \$14.50
  - Hot Water Bath . . . . . \$305.95
  - Base Plate Wax . . . . . \$6.50
  - Lab Knife . . . . . \$10.00
  - Carbide Barrel Bur . . . . . \$10.95
  - Acrylic . . . . . \$26.95
  - Dapen Dish
  - Disposable Spatula

To order the tools necessary to take an accurate construction bite call

**800-423-3270**

or visit **www.appliancetherapygroup.com**